

EmWat 4000 Kit

ROLE

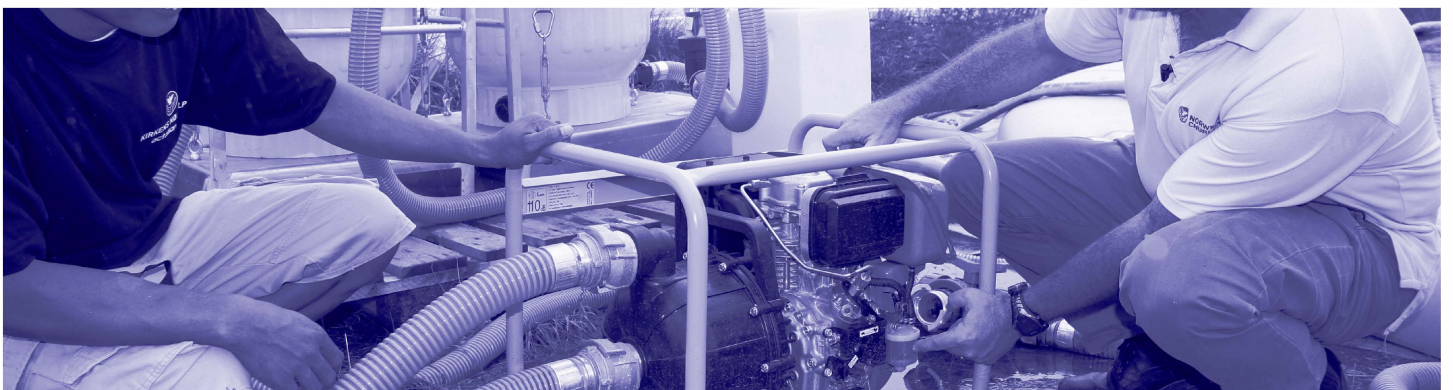
The EmWat (Emergency Water) 4000 Kit is a truck portable, stand alone, self-contained water filtration system primarily designed for use in emergencies. The system is capable of supplying up to 4,000 litres of safe drinking water an hour, enough to provide for the daily needs of 3000-5000 people (7 to 8 litres per person per day), making it ideal for refugee camps and small villages.

USE

The standard EmWat4000 kit is supplied with a diesel driven pump (other options available) that draws from the chosen raw water source. This water is filtered by a process of coagulation, flocculation, sand and carbon filtering before being disinfected with chlorine. After filtering and chlorination the water is safe to drink and stored in the kit's two 10,000 litre pillow tanks. Clean drinking water is then distributed to end users by four tap stations, each fitted with six high capacity self-closing HiFlo taps.

DESCRIPTION

The EmWat Kit is comprised of components for water pumping, flocculation, filtration, sterilization, storage, and distribution. The kit is supplied in 3 palletised sectional wooden crates and weighs 874 kg (gross weight, net weight 601) in total. Each component weighs less than 100 kg so no lifting equipment is required. In good terrain the unit can be deployed and set up within 6 hours and comes with clear and easy to follow operating and maintenance instructions, plus spare parts for several essential components. No specialist skills are required and all necessary set-up and maintenance tools are included. To extend the kit through to complete end user distribution the kit can also be supplied with U-Cans, a-aqua's 10 litre light-weight fully-collapsible jerry cans.



TECHNICAL INFORMATION

Capacity: 4000L per hour average = 2000 to 5000 people.

Installation & Maintenance: All tools provided. Installation guide time 3-6 hours in favourable conditions. Maintenance requirements; Diesel pump as per operators manual, sand filter back-washing, dosing of consumables.

Storage: Dry environment above 0°C degrees.

Consumables: Diesel (pump unit).
Coag/Floc Tablets (coagulant unit).
Sand and carbon media (filter units): once per annum if in constant use.
Chlorine tablets (chlorination unit).

Optional Extras: U-CANS
fully collapsible Jerry Cans.
Flocculation kit with onion tanks and dosing
Spare Consumables Kit (3 months)

Shipping data:

Gross Volume 3.89m³

Gross Weight 874kg

Dimensions	L.	W.	H.
Pallet 1	80cm	120cm	135cm
Pallet 2	80cm	120cm	135cm
Pallet 3	80cm	120cm	135cm

Special consideration: HTH chlorine transport restrictions and requirement for

Product no: 1200

STANDARD PACKING LIST

1. Water strainer, float, and foot valve.
2. Diesel pump (other options available).
3. Coagulation chamber.
4. Flocculation chamber.
5. Sand filter.
6. Carbon filter with in line chlorinator.
7. 2 x 10,000 litre pillow tanks.
8. 4 x Tap stations, each with 6 HiFlo taps.
9. Connection kit.
10. Tool kit with everything required for installation, maintenance, and ground preparation.
11. Start-up chemicals (flocculation tablets, chlorine tablets) for around 2500 ltr.
12. Operating and maintenance manuals.

